

# MILA

## Resort + Modular

BY DESTINATION GREEN



# MILΛ RESORT

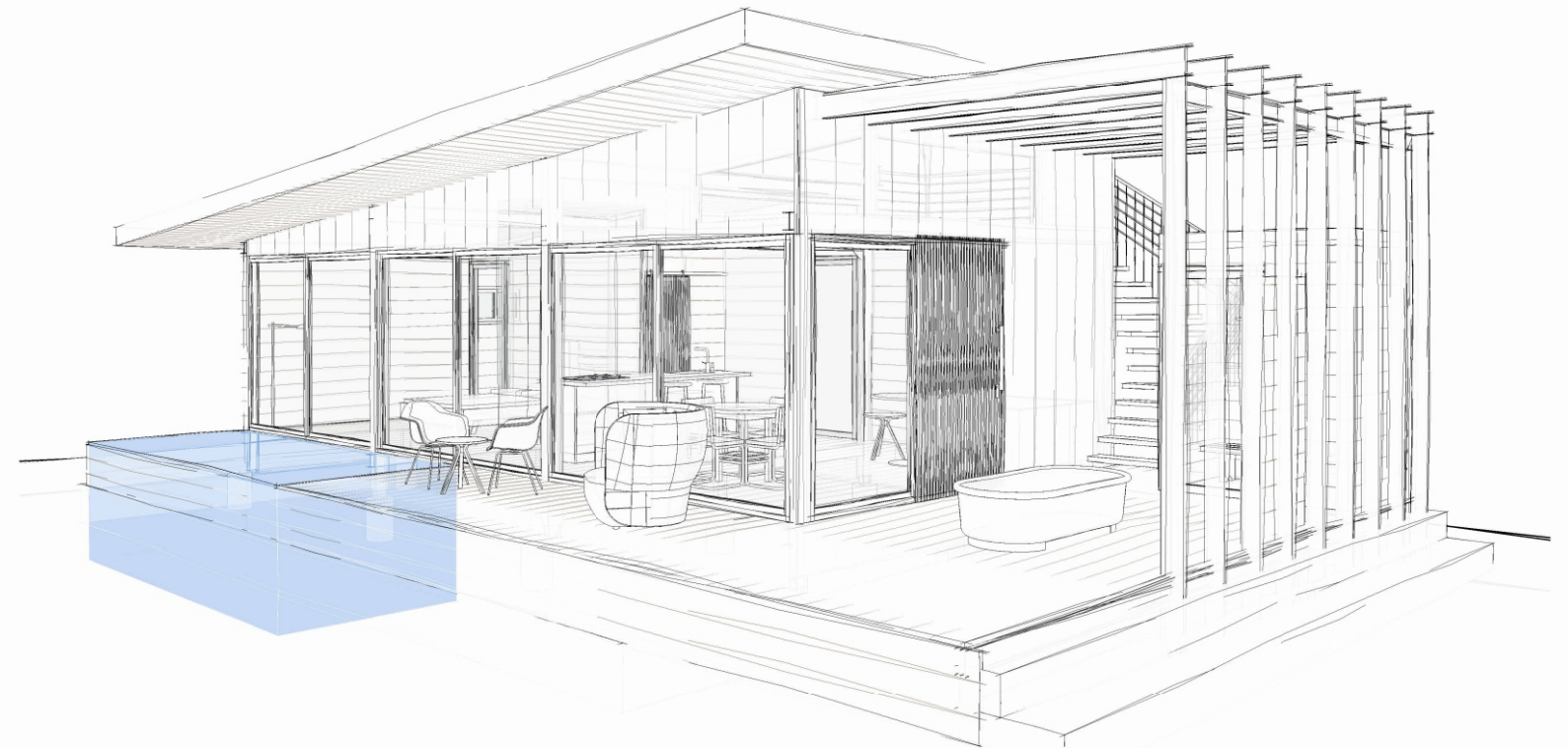
For Hospitality operators defining the future of travel.

The shift from expense to experience has changed the hospitality industry. To compete, you need agility, sustainability and a compelling story. Our Mila resort unit has it all, with 1,2 or even 3 bedroom configurations all with solar panels. The structure will be build using a main steel frame combined with cross-laminated recycled teak ( CLT) for cladding we use our bio-composite material ensuring durability and natural climate control this villa breaths sustainability.

The structure will be build using a main steel frame combined with cross-laminated recycled teak ( CLT) for cladding we use our bio-composite material ensuring durability and natural climate control this villa breaths sustainability. With a pool, outdoor spa with sauna and cold plunge your guests have a complete wellness experience. After the sauna or massage in the afternoon u can relax on the rooftop terrace. Our prefab Mila will significantly reducing construction time + no construction disturbance.

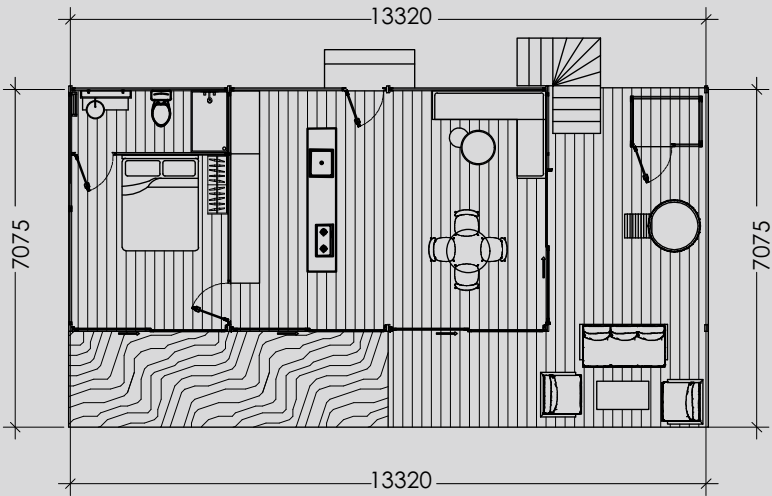
Mila resort empowers you to meet the demand for eco-friendly getaways in extraordinary locations.

Mila resort is build with a combination of CLT and Glulam, engineered from 100% recycled teak and This innovative approach transforms our villas into active climate solutions, with each cubic meter locking away approximately 700 kg of CO2. Experience luxury that leaves a lower carbon footprint compared to other building materials

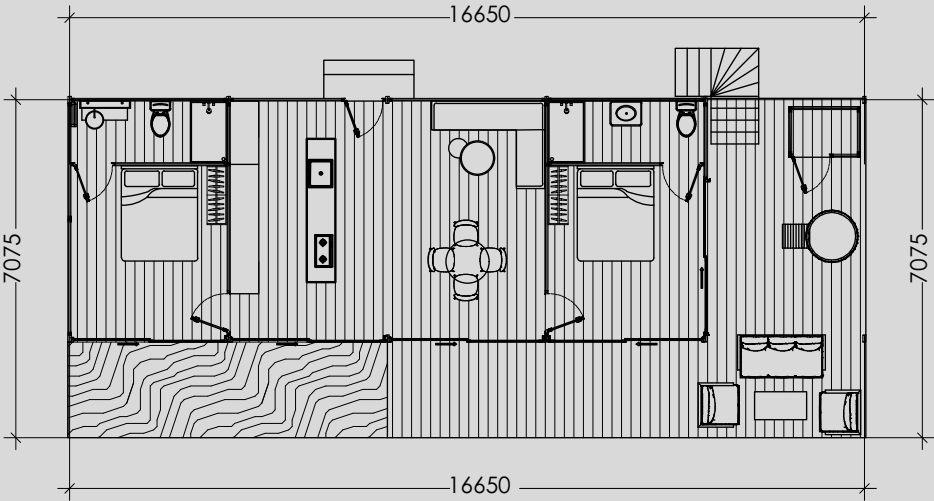




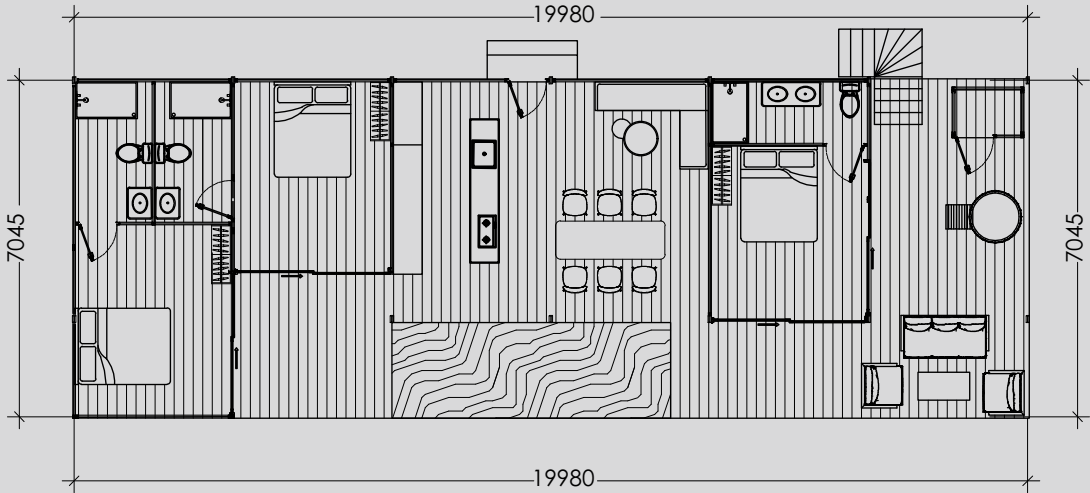
MILΛ RESORT



MILΛ  
resort 1 bedroom



MILΛ  
resort 2 bedroom



MILΛ  
resort 3 bedroom

- 

Configuration/Drawing 3-4 weeks
- 

Shipment 1-10 weeks (depending on location)
- 

Manufacturing 10-12 week
- 

Installation 2-3 weeks

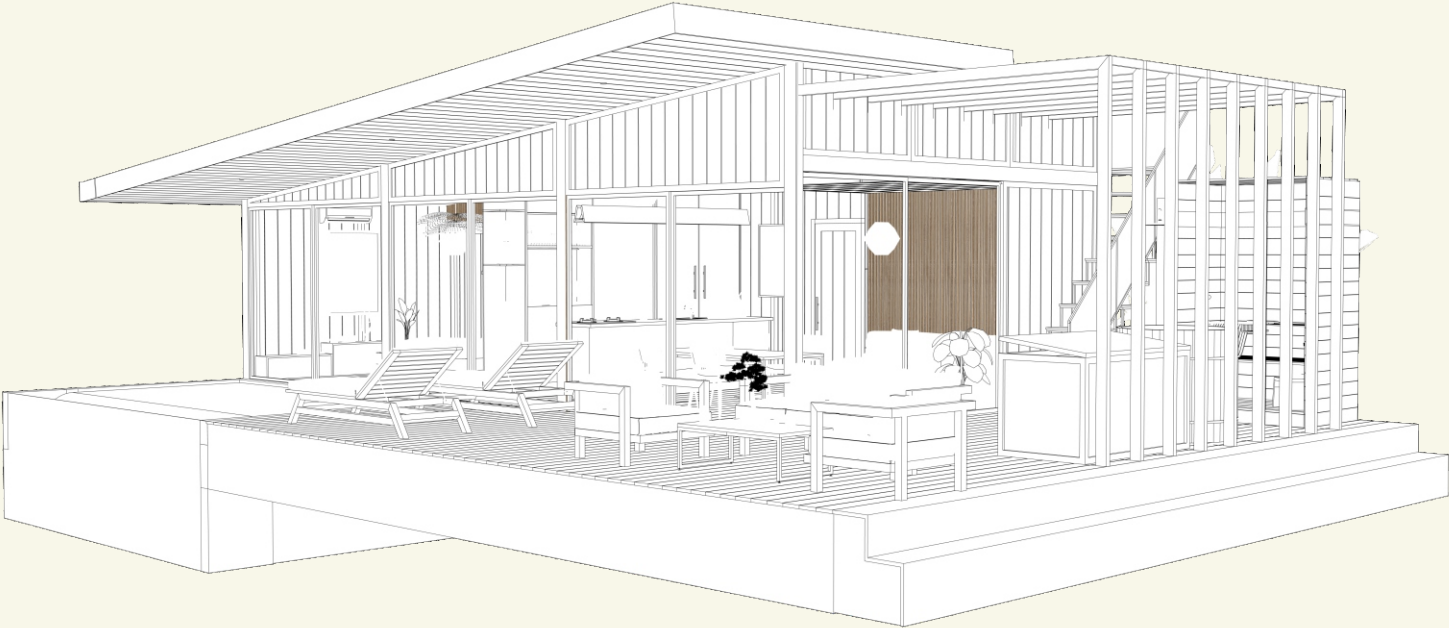
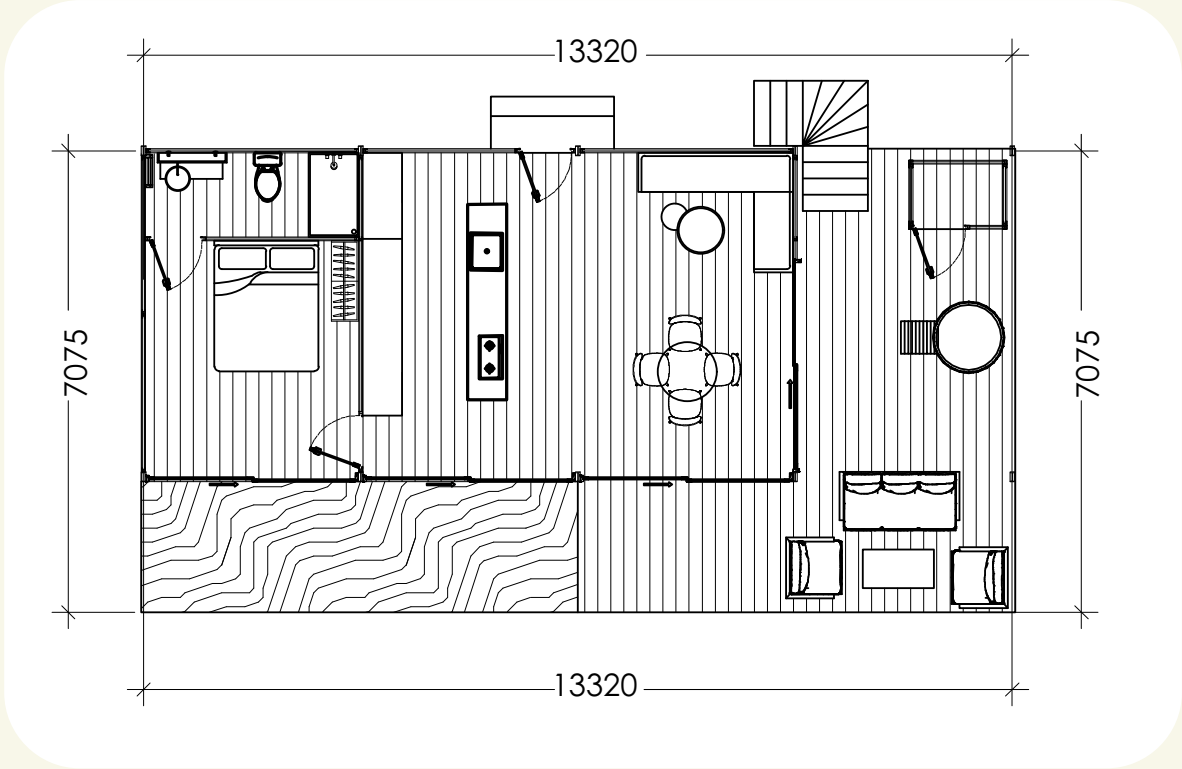






MIL RESORT 1 BEDROOM

- 2 P
- 1 X
- 1 X
- 1 X





# MILAN MODULAR

## Our story:

MILA Modular, A sustainable luxury concept, a modern modular home offering elegant design for your private home or a unique concept for hospitality.

Mila developed by Destination Green, beautifully designed by Archidix Architects Amsterdam, both with more than 20 years experience. We're redefining eco-friendly living with our pre-fabricated bio-composite modular bungalows – where sustainability meets smart modern design. These sustainable bungalows feature bio-composite and teak panels for outdoor and indoor walls - all made from recycled materials- installed within a steel structure ensuring sturdy structural strength. The floors and roof are made as well with our bio-composite material, the joist substructure produced in recycled laminated teak. The double walls and roof are insulated with coco fibre. Each bungalow structure is built at our location before being shipped to its final destination for assembly. What sets our bungalows apart is their modern modular design, allowing extra extensions when needed.

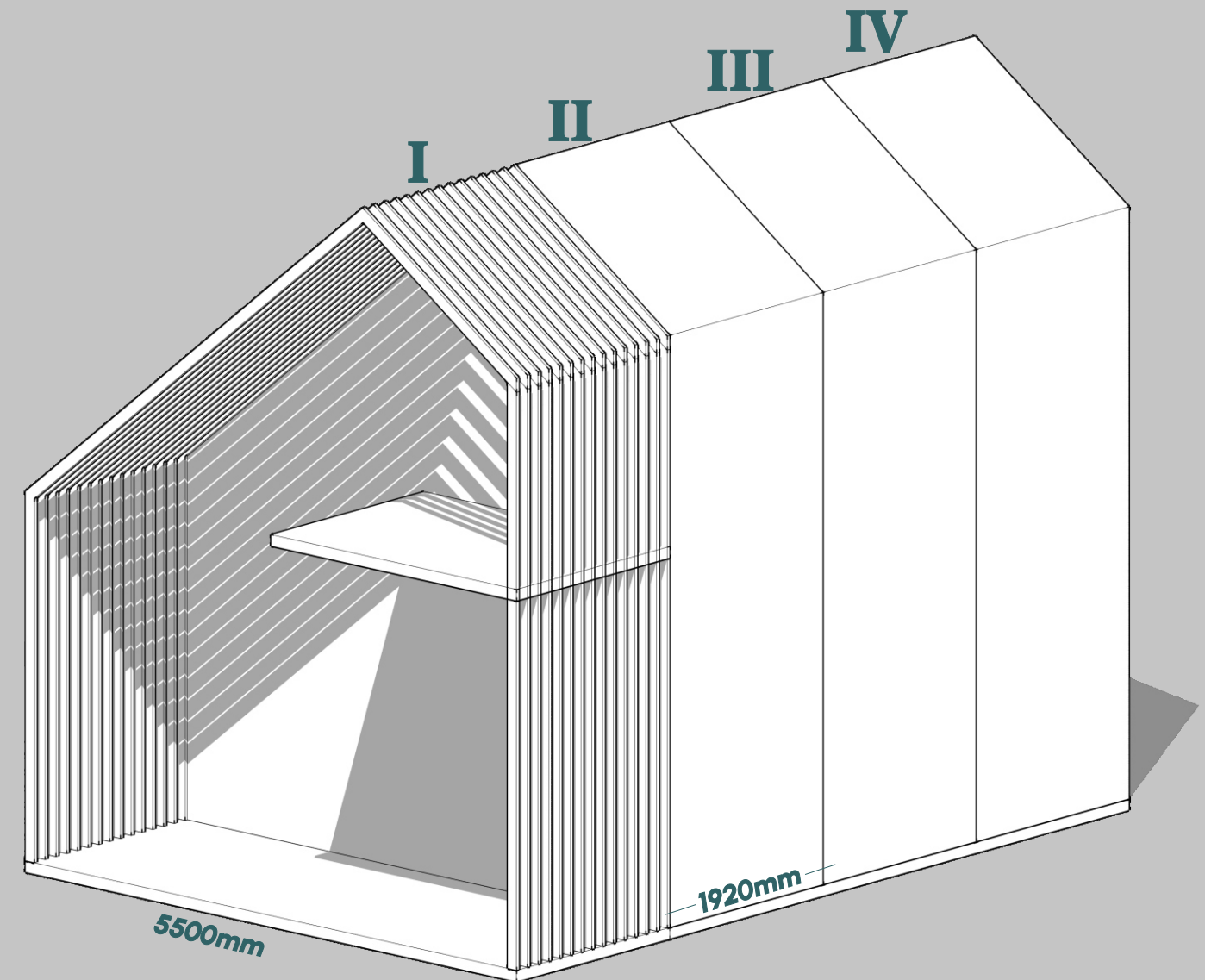
With sections measuring 1920 x 5500 mm or 1920 x 9200 mm, these bungalows offer flexible living spaces. The smallest size starts at 42 m2 downstairs with a mezzanine of 24.5 m2, totalling 66.5 m2. Our biggest unit has over 120 m2 living space.

## ECO-CONSCIOUS CONSTRUCTION/ LOW CARBON FOOTPRINT

- Walls, floors and roof made from bio-composite panels/profiles
- Steel H-beam framework for lasting durability.
- Thermo double walls/roof with coco fibre insulation.
- Floor and roof joist made from laminated recycled teak.
- No painting or concrete spills on building site
- off grid options using solar panel system with batteries

## MODERN LIVING PERFECTED

- Factory built for precision quality.
- Prefabrication benefits, faster building time vs traditional building method
- Easily expandable- add modules as your needs grow. Whether a minimalist studio or an expansive - family home.
- Turnkey solutions
- Reduced labor cost and on-site disruptions.
- 10 years warrantee on structure and bio-composite material

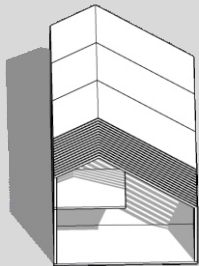


## MODULAR SECTIONS

MILAN IV  
68 m2

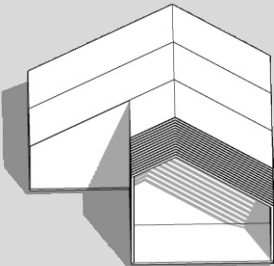
MILAN MODULAR

\* Price Include MEP, Furniture, Kitchen & Equipment



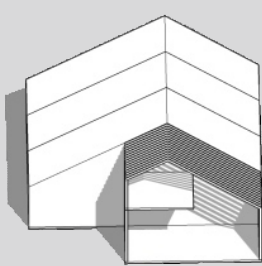
MILAN IV  
68 m2

\$ 59.500



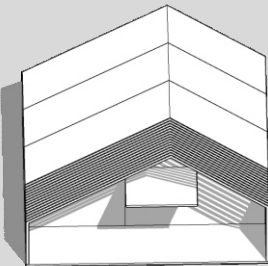
MILAN IV + II  
83 m2

\$ 72.625



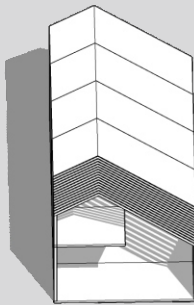
MILAN IV + III  
92 m2

\$ 80.500



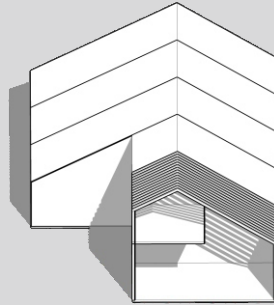
MILAN IV + IV  
98 m2

\$ 85.750



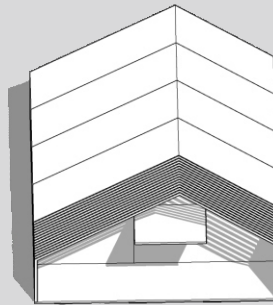
MILAN V  
85 m2

\$ 73.375



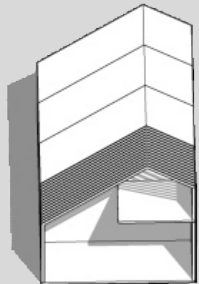
MILAN V + III  
101 m2

\$ 88.375

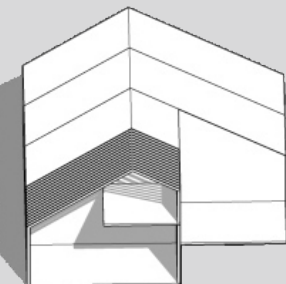


MILAN V + V  
115 m2

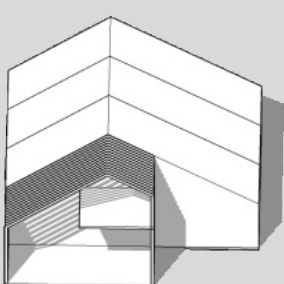
\$ 100.625



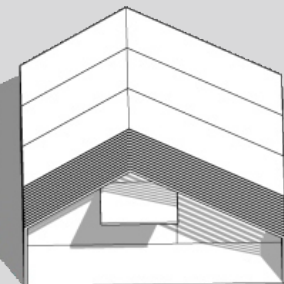
MILAN IV  
68 m2



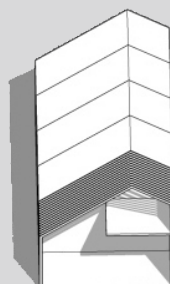
MILAN IV + II  
83 m2



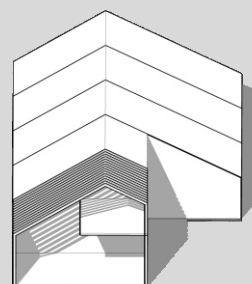
MILAN IV + III  
92 m2



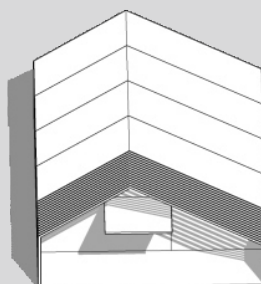
MILAN IV + IV  
98 m2



MILAN V  
85 m2

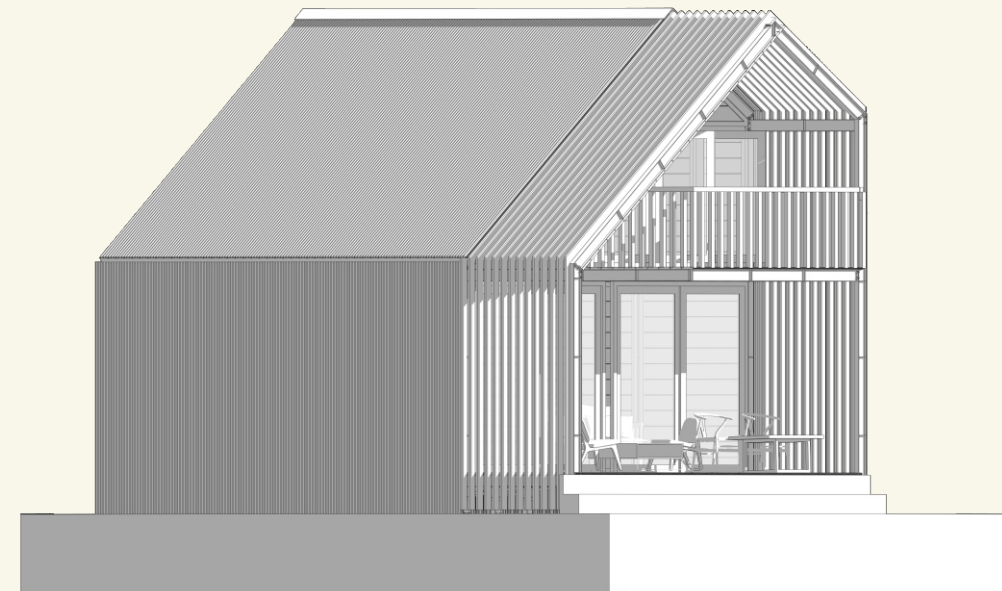
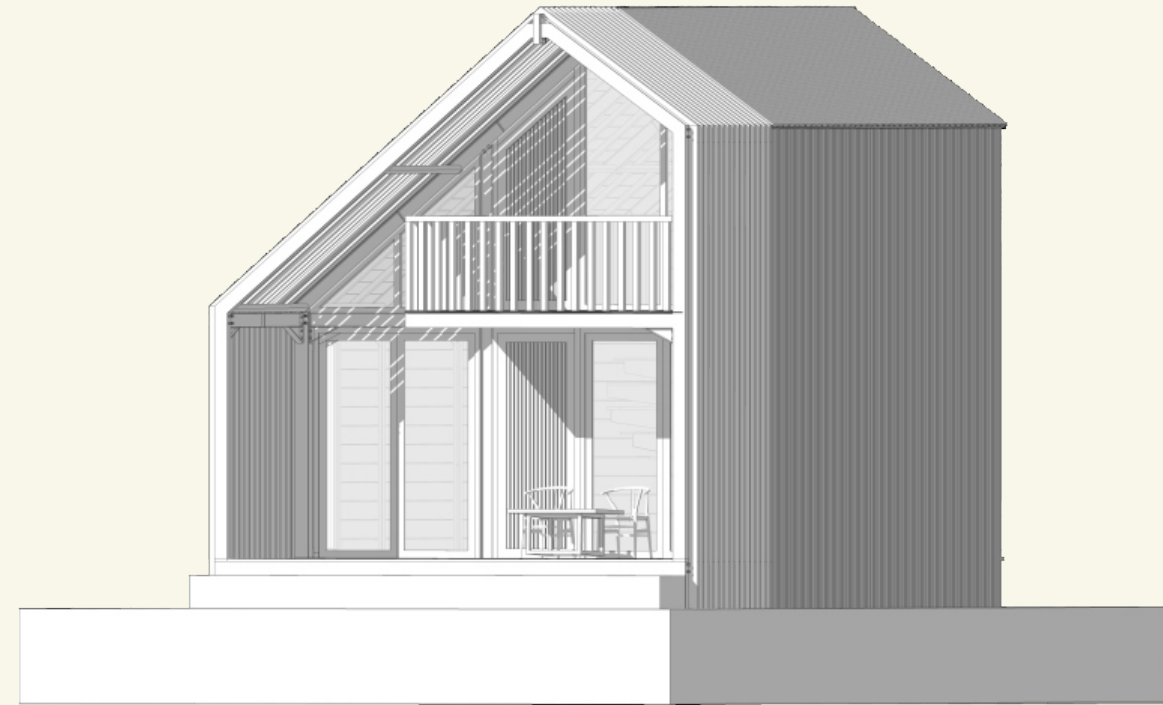
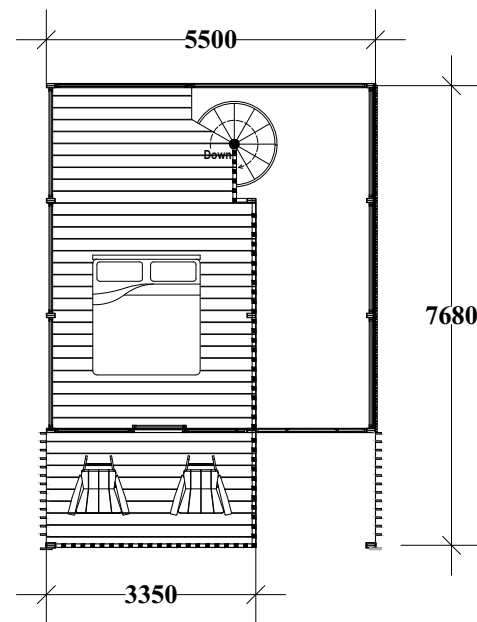
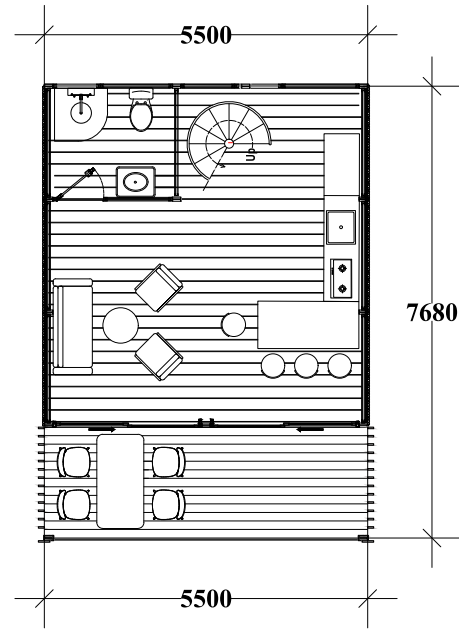


MILAN V + III  
101 m2



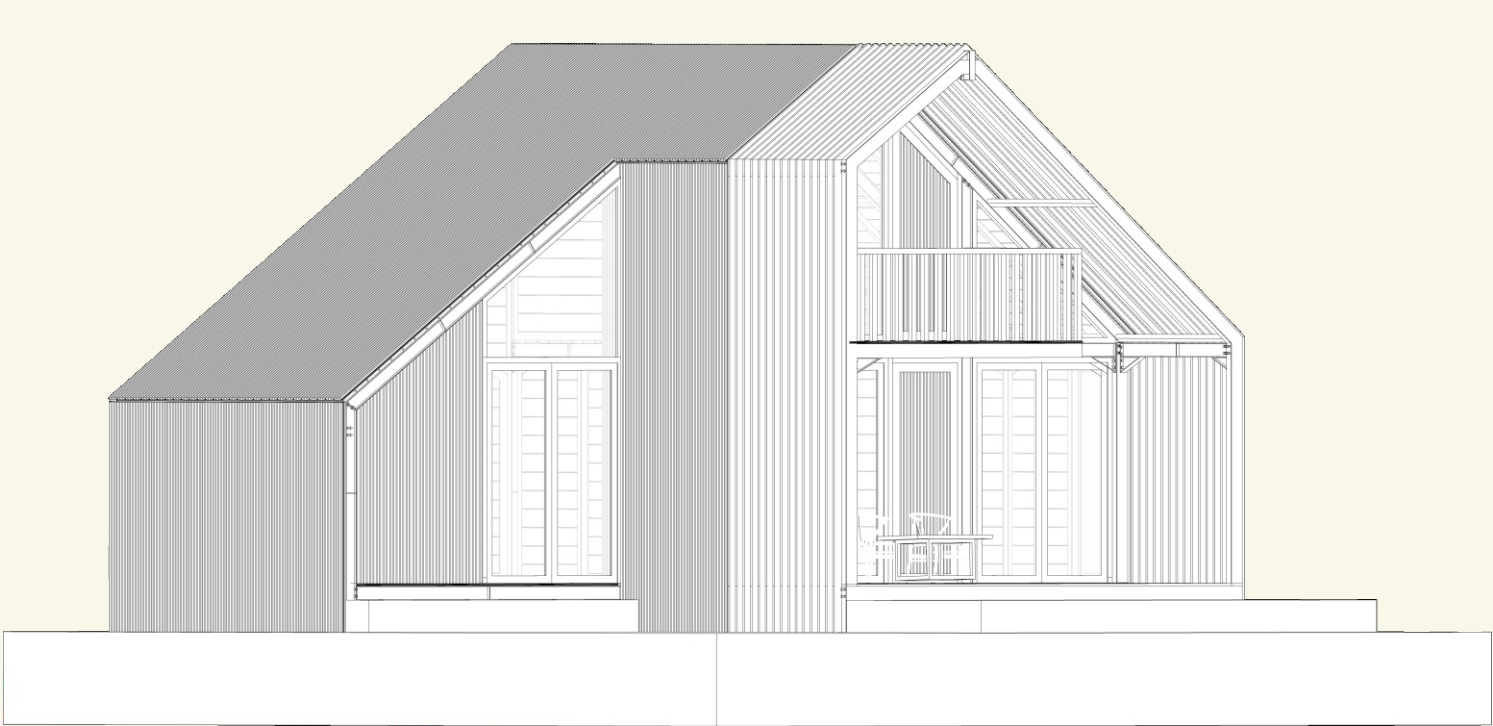
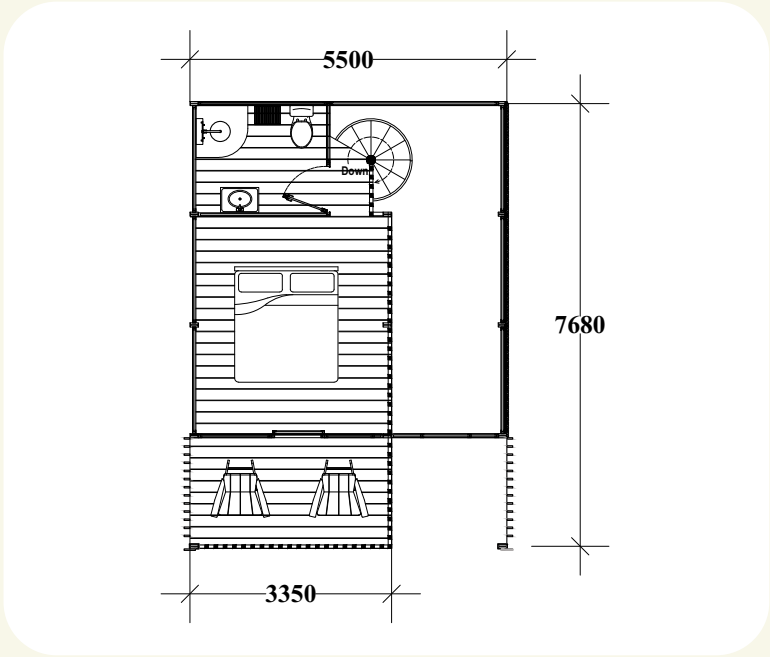
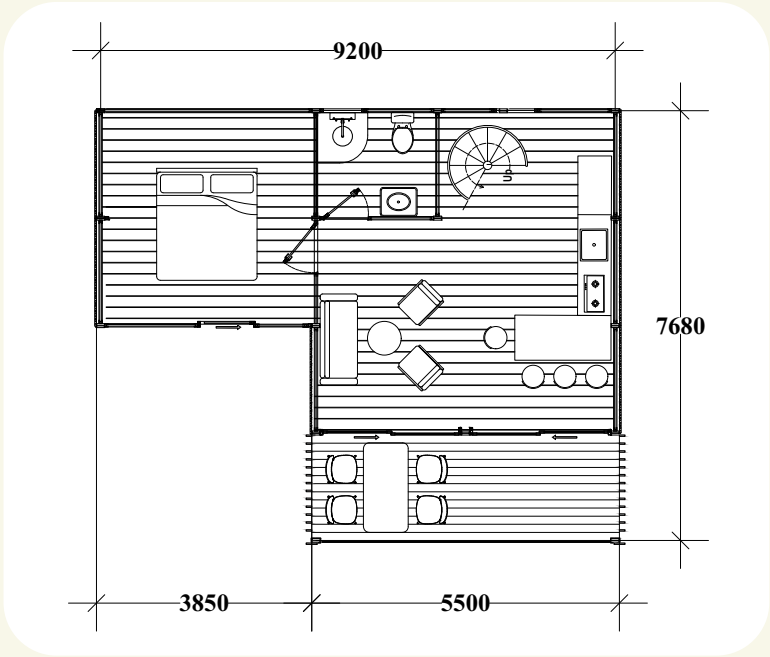
MILAN V + V  
115 m2

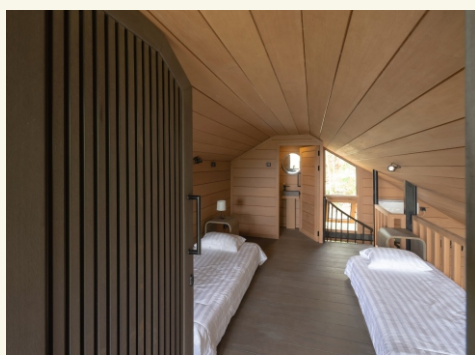
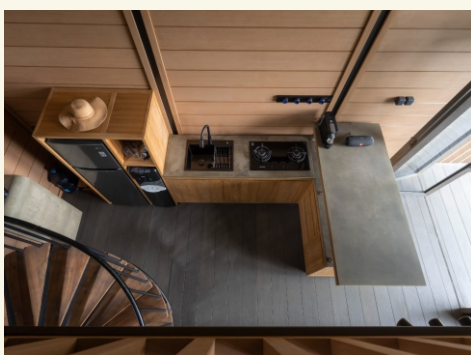
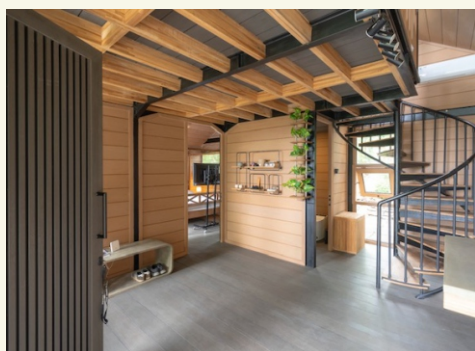
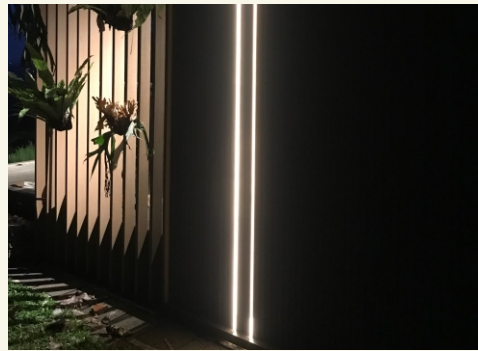
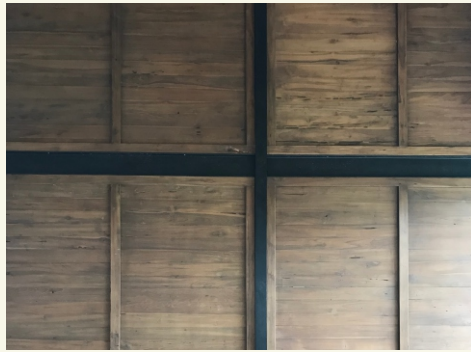
MILAN IV  
 68 m<sup>2</sup>  
 2 P  
 1 X  
 1 X  
 1 X





MIL<sup>^</sup> IV+ II  
83 m<sup>2</sup>  
4 P  
2 X  
2 X  
1 X









- **ebony grey for roof and wall**
- **madura teak for sunshade/  
balcony fence/indoor panels**
- **iron circular stair with reclaimed  
teak steps**
- **laminated recycled teak joist  
support for mezzanine**



# PANEL OPTIONS



Bio-Composite Panel  
Madura Teak



Bio-Composite Panel  
Madura Teak  
(White Wash)



Reclaimed Teak Panel

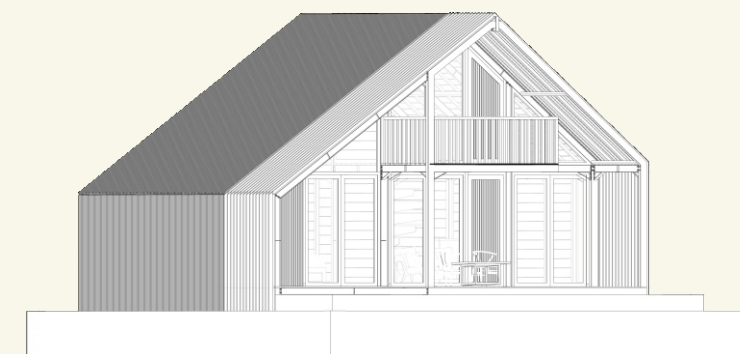
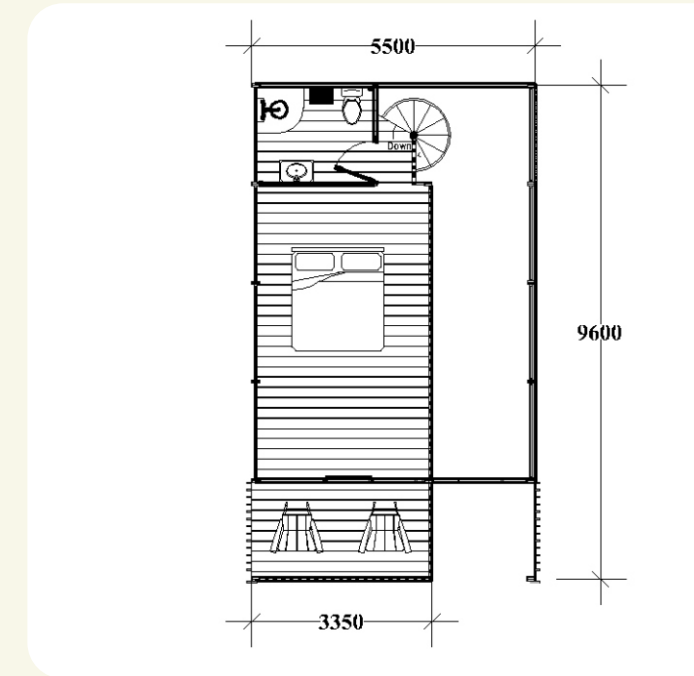
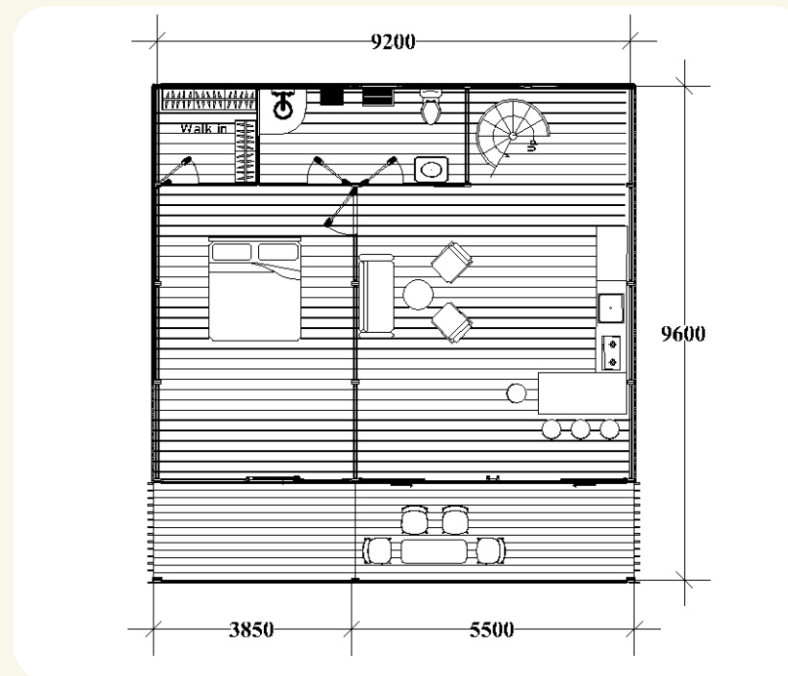
● For indoor we have the option to use  
rustique reclaimed teak panel + doors  
instead of our bio-composite







Steel H-Beams 150 + Recycled Teak Glulam Substructure



MIL V+V

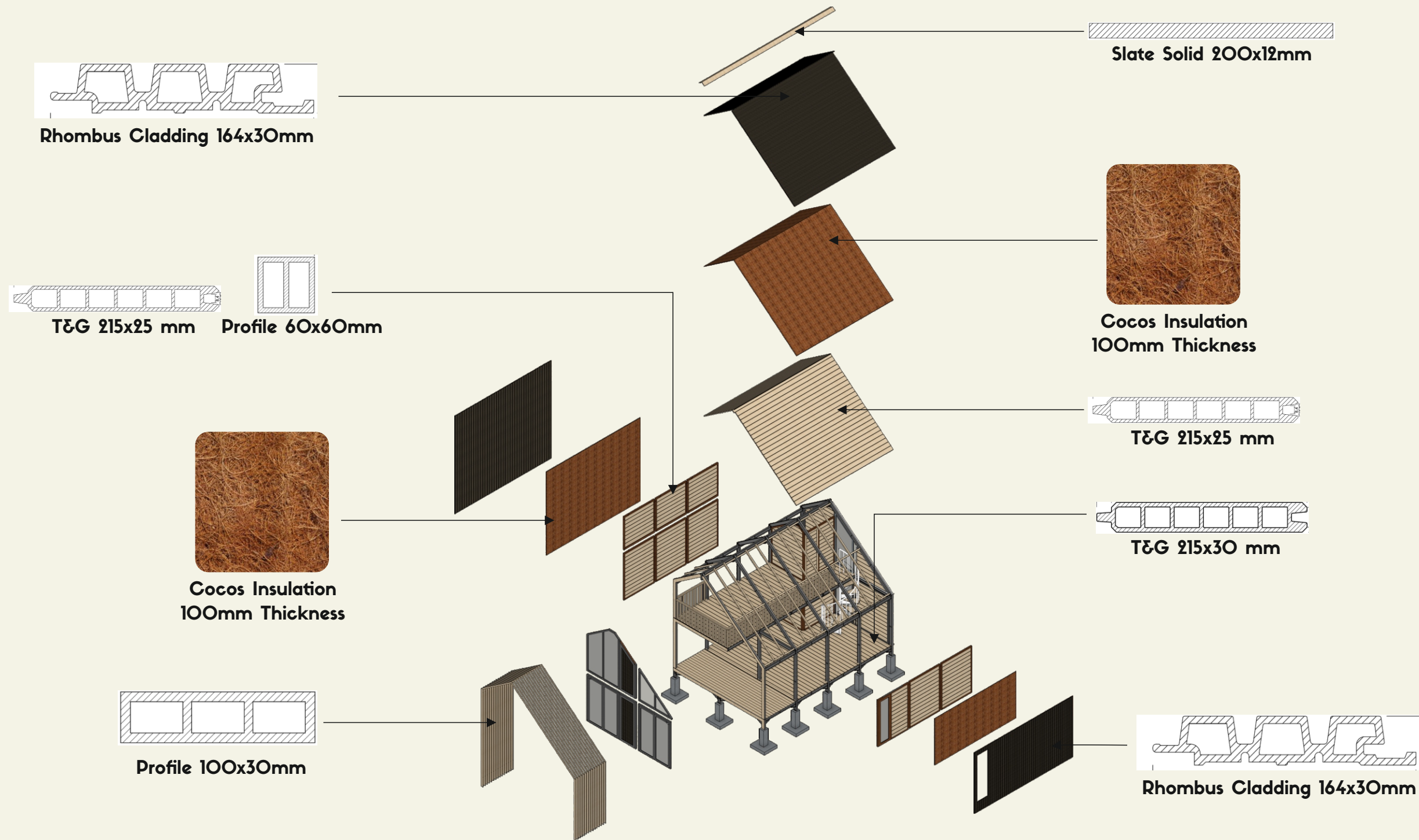
115 m<sup>2</sup>

4 P

2 X

1 X









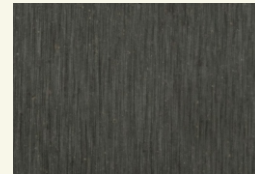
Madura Teak



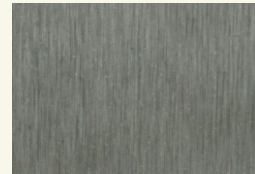
Siam Teak



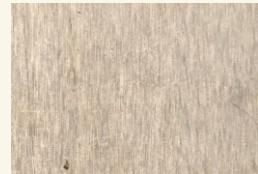
Walnut Brown



Ebony Grey



Light Grey



Weathered Grey



#### OUR BIO-COMPOSITE EXPLAINED:

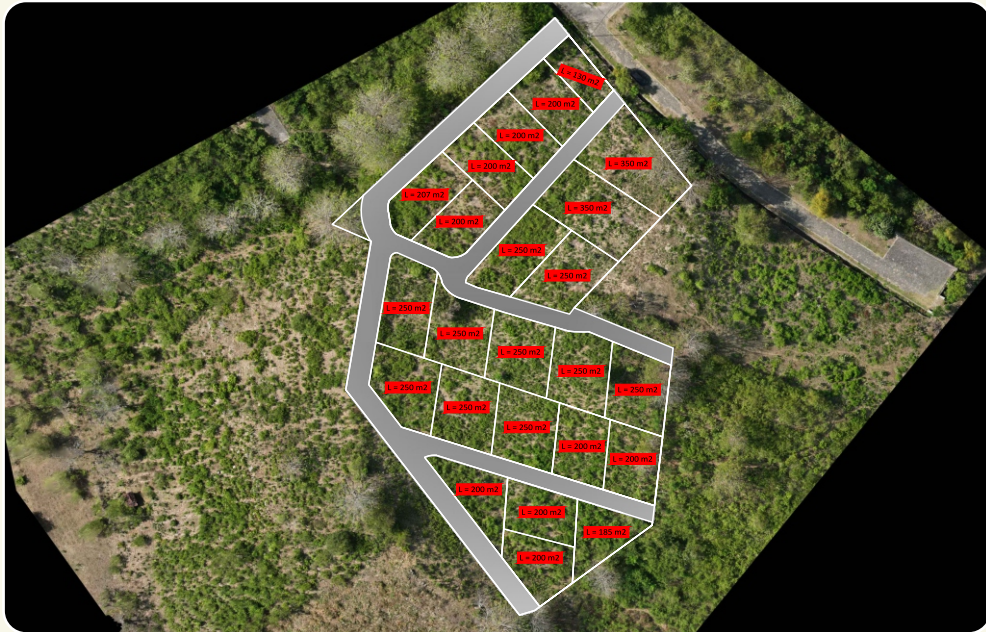
Bio-composite - a sustainable solution specially for outdoor applications! Our mixture of natural fibres such as teak or rice husk with recycled HDPE results in a high-density material that is termite resistant, water-absorption-free, incredibly strong, long lasting and with minimal maintenance.

The use of Bio-composite over traditional materials presents a strong case for sustainability and environmental consciousness. Our eco-friendly approach prioritizes the utilization of 80% recycled material, with natural fibre as the primary component, followed by recycled HDPE. The use of recycled materials ensures sustainability and 100% recyclability, aligning with our eco-conscious

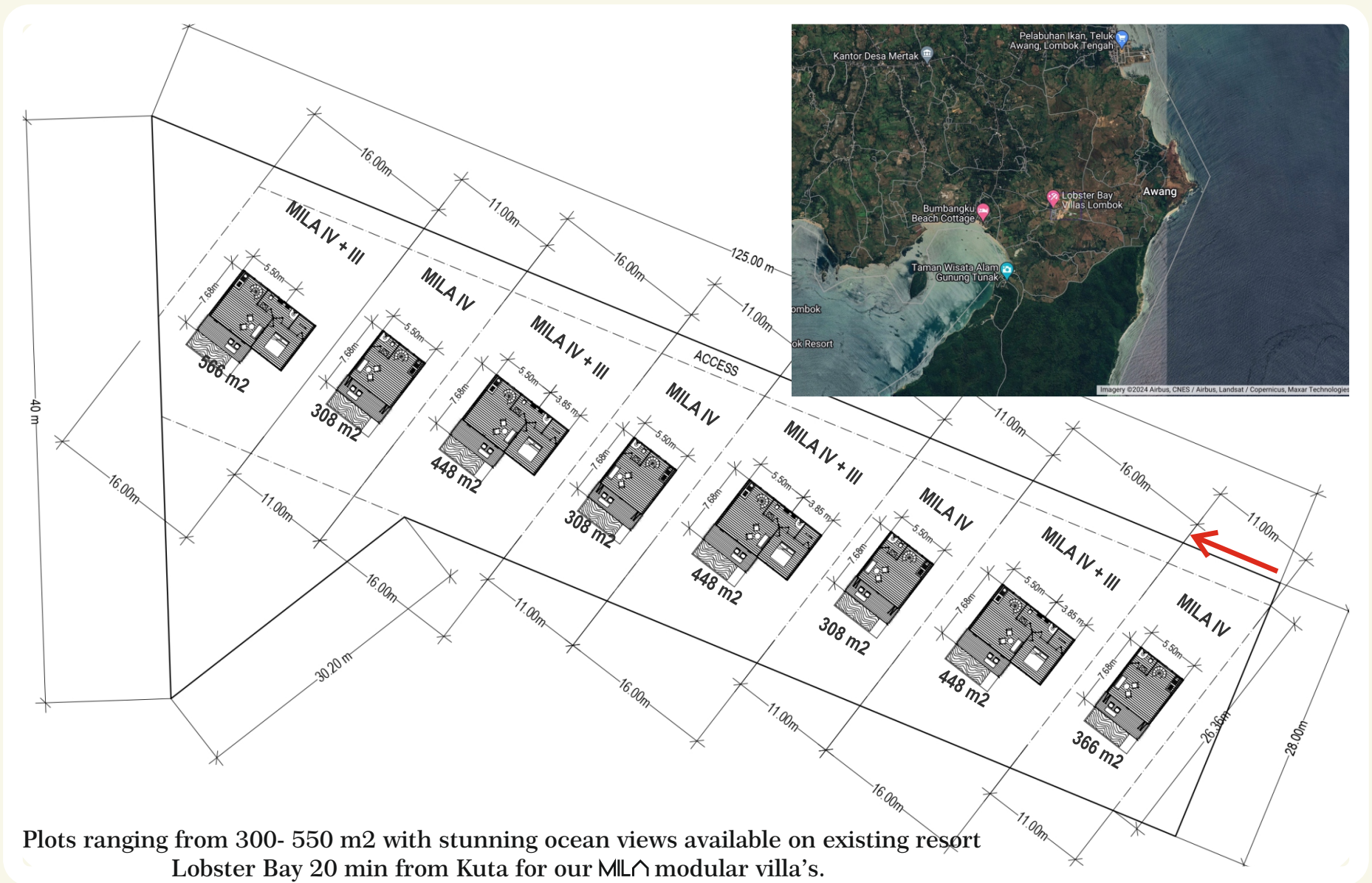
One of our significant advantages of choosing Bio-composite is the preservation of natural resources, as no trees are cut during the production process, we purely use waste materials. We tick all the boxes concerning a low carbon footprint

Plus, bio-composite is built to last- it's strong, low maintenance and lasts for generations..





Plots ranging from 130- 350 m2 available in Kuta Lombok near the ocean and international motor circuit for our MILA resort 1,2 and 3 bedroom villa's.



Please contact us at  
martijn@milavilla.com  
martijn@destination-green.com



www.milavilla.com  
www.destination-green.com



+ (62) 822 2619 3699  
+ (62) 811 2541 440



Destination Green  
Sribitan Rt.02 ,Bangunjiwo, Kasihan, Bantul  
Yogyakarta

